



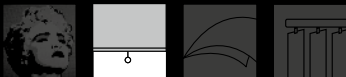
Eco

Fabric code

AS04A

OF 4%

Ideal to combine Green & Eco.
Ultra thin & 100% polyester fabric.



Internal applications

Greenscreen



Fabric code

AS04A

OF 4%

Greenscreen

ECO

Yarn

Technical specifications	Average Values
Composition	Polyester 100%

Fabric

Type of fabric	100% polyester fabric
Widths	2400 mm (tolerance -0%, +5%)
Roll length (nominally)	50 m

Technical specifications	Average Values	Standard
Thickness	0.39 mm	ISO/DIS 5084.2 (1996)
Mass	180 g/m ²	ISO 3801 (1977)
Fire resistance	M1	NF P92-503 (1995)
	B1	DIN 4102 (1998)
Volatile organic compounds (VOC)	complies	GREENGUARD
	complies	GREENGUARD Children & Schools
Breaking strength	warp 97 daN, weft 38.1 daN	ISO 13934-1 (1999)
Elongation at break	warp 53.5%, weft 34%	ISO 13934-1 (1999)
Tear resistance	warp 5.97 daN, weft 4.8 daN	ISO 4674 part 1 method A (2003)
Colourfastness	7 scale of blue	ISO 105 B02 (1994)
UV-resistance	4-5 scale of grey (1-5)	ISO 105 B02 (1994)
Air porosity	1220 l/m ² /sec	ISO/DIS 9237 (1995)
Cradle to Cradle	Silver	Cradle to Cradle Certified™ Product Standard



The Quality Chain

General - specifications are purely indicative and may not be considered as binding. Colours may vary from the samples shown

Cutting	ultrasonic; width out of roll width, do not railroad
Welding	thermal, HF and ultrasonic by means of pvc welding tape, sewing
Cleaning	vacuum cleaning or using a soft cloth

000204 ice
Width: 2400 mm



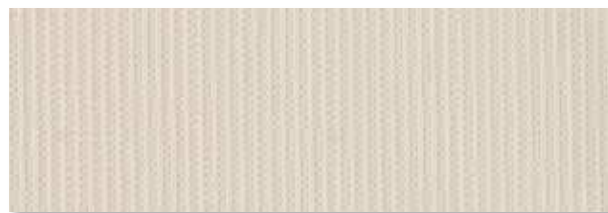
Solar Heat & Light Control Properties

	Ts	Rs	As	Tv	TVdiff	TVdir	Tuv	TVdif-h	Glare Control
	49.1	46.1	4.8	49.1	44.1	5	22.2	43	Class 1

gtot

	A	B	C	D
	int.	int.	int.	int.
Values	0.55	0.53	0.45	0.28
Classes	0	0	1	2

000750 eggshell
Width: 2400 mm



Solar Heat & Light Control Properties

	Ts	Rs	As	Tv	TVdiff	TVdir	Tuv	TVdif-h	Glare Control
	43	43	14	39.7	35.4	4.3	18.4	34.7	Class 1

gtot

	A	B	C	D
	int.	int.	int.	int.
Values	0.51	0.49	0.43	0.27
Classes	0	1	1	2

001500 iron
Width: 2400 mm



Solar Heat & Light Control Properties

	Ts	Rs	As	Tv	TVdiff	TVdir	Tuv	TVdif-h	Glare Control
	38.8	37.9	23.3	28.2	24.3	3.9	17.2	24.5	Class 1

gtot

	A	B	C	D
	int.	int.	int.	int.
Values	0.52	0.5	0.44	0.27
Classes	0	0	1	2

001887 charcoal
Width: 2400 mm



Solar Heat & Light Control Properties

	Ts	Rs	As	Tv	TVdiff	TVdir	Tuv	TVdif-h	Glare Control
	29.2	23.4	47.4	5.8	2.5	3.3	9.5	4.7	Class 2

gtot

	A	B	C	D
	int.	int.	int.	int.
Values	0.54	0.53	0.45	0.28
Classes	0	0	1	2

002780 rock
Width: 2400 mm



Solar Heat & Light Control Properties

	Ts	Rs	As	Tv	TVdiff	TVdir	Tuv	TVdif-h	Glare Control
	31.4	29.2	39.4	12.3	8.2	4.1	10.6	10.3	Class 1

gtot

	A	B	C	D
	int.	int.	int.	int.
Values	0.62	0.59	0.5	0.29
Classes	0	0	1	2

004748 feather
Width: 2400 mm



Solar Heat & Light Control Properties

	Ts	Rs	As	Tv	TVdiff	TVdir	Tuv	TVdif-h	Glare Control
	42.4	38	19.6	33.8	28.9	4.9	18.5	29.4	Class 1

gtot

	A	B	C	D
	int.	int.	int.	int.
Values	0.58	0.56	0.48	0.29
Classes	0	0	1	2

004999 **ebony**

Width: 2400 mm



Solar Heat & Light Control Properties

	Ts	Rs	As	Tv	TVdiff	TVdir	Tuv	TVdif-h	Glare Control
	28.4	25.9	45.7	9.2	5.4	3.7	8.1	7.5	Class 1

g_{tot}

	A	B	C	D
	int.	int.	int.	int.
Values	0.6	0.58	0.49	0.29
Classes	0	0	1	2