



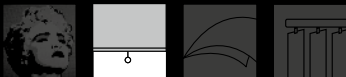
Platinum

Fabric code

AS02M

OF 2%

Ideal to combine Green & Eco.
Ultra thin & 100% polyester fabric
with an aluminum layer.



Internal applications

Greenscreen



Fabric code

AS02M

OF 2%

Greenscreen Platinum

Yarn

Technical specifications	Average Values
Composition	Polyester 100% (metalized backing)

Fabric

Type of fabric	100% polyester fabric
Widths	2400 mm (tolerance -0%, +5%)
Roll length (nominally)	50 m

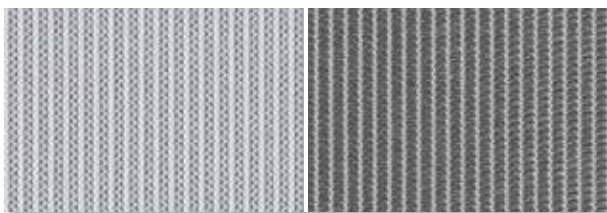
Technical specifications	Average Values	Standard
Thickness	0.40 mm	ISO/DIS 5084.2 (1996)
Mass	179 g/m ²	ISO 3801 (1977)
Fire resistance	M1 B1	NF P92-503 (1995) DIN 4102 (1998)
Breaking strength	warp 104 daN, weft 40.8 daN	ISO 13934-1 (1999)
Elongation at break	warp 43.5%, weft 41%	ISO 13934-1 (1999)
Tear resistance	warp 5.24 daN, weft 5.9 daN	ISO 4674 part 1 method A (2003)
Colourfastness	7 scale of blue	ISO 105 B02 (1994)
UV-resistance	5 scale of grey (1-5)	ISO 105 B02 (1994)
Air porosity	693 l/m ² /sec	ISO/DIS 9237 (1995)

The Quality Chain

General - specifications are purely indicative and may not be considered as binding. Colours may vary from the samples shown

Cutting	ultrasonic; width out of roll width, do not railroad
Welding	thermal, HF and ultrasonic by means of pvc welding tape, sewing
Cleaning	vacuum cleaning or using a soft cloth

000204 ice - A/B
Width: 2400 mm



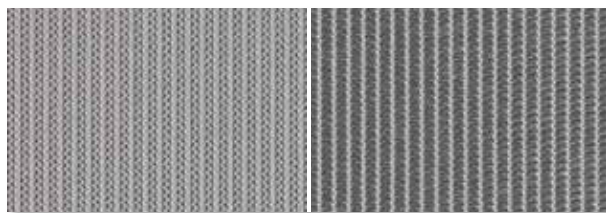
Solar Heat & Light Control Properties

	Ts	Rs	As	Tv	TVdiff	TVdir	Tuv	TVdif-h	Glare Control
A	10.5	42.1	47.4	10.9	8.8	2	7	9.3	Class 1
B	10.5	46.4	43.1	10.9	8.8	2	7	9.3	Class 1

gtot

	A	B	C	D
	int.	int.	int.	int.
A Values	0.48	0.49	0.43	0.27
A Classes	1	1	1	2
B Values	0.46	0.46	0.42	0.27
B Classes	1	1	1	2

001500 iron - A/B
Width: 2400 mm



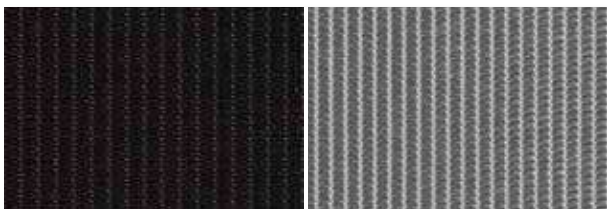
Solar Heat & Light Control Properties

	Ts	Rs	As	Tv	TVdiff	TVdir	Tuv	TVdif-h	Glare Control
A	9.3	35.9	54.8	8.1	5.8	2.4	6.4	6.9	Class 1
B	9.3	46	44.7	8.1	5.8	2.4	6.4	6.9	Class 1

gtot

	A	B	C	D
	int.	int.	int.	int.
A Values	0.52	0.52	0.45	0.28
A Classes	0	0	1	2
B Values	0.46	0.46	0.42	0.27
B Classes	1	1	1	2

001887 charcoal - A/B
Width: 2400 mm



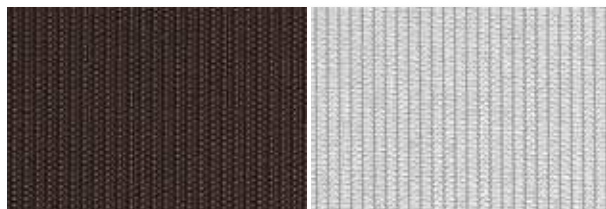
Solar Heat & Light Control Properties

	Ts	Rs	As	Tv	TVdiff	TVdir	Tuv	TVdif-h	Glare Control
A	7.5	21.8	70.7	3.2	0.9	2.3	4.2	2.5	Class 3
B	7.5	41.7	50.8	3.2	0.9	2.3	4.2	2.5	Class 3

gtot

	A	B	C	D
	int.	int.	int.	int.
A Values	0.6	0.59	0.5	0.29
A Classes	0	0	1	2
B Values	0.48	0.49	0.43	0.27
B Classes	1	1	1	2

004999 ebony - A/B
Width: 2400 mm



Solar Heat & Light Control Properties

	Ts	Rs	As	Tv	TVdiff	TVdir	Tuv	TVdif-h	Glare Control
A	9.1	23	67.8	5.1	2.4	2.7	4.9	4.1	Class 2
B	9.1	39.9	51	5.1	2.4	2.7	4.9	4.1	Class 2

gtot

	A	B	C	D
	int.	int.	int.	int.
A Values	0.59	0.58	0.49	0.29
A Classes	0	0	1	2
B Values	0.49	0.5	0.44	0.27
B Classes	1	1	1	2