



# Panama Chrome

**Fabric code**

BJ03M

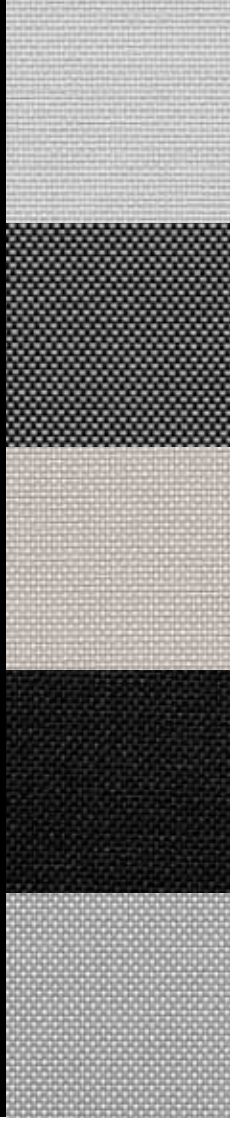
OF 3%

Metalized backing to combine excellent glare control, view through and thermal comfort.



Internal applications

The Screen Essentials



## Fabric code

BJ03M  
OF 3%

## The Screen Essentials

# Panama Chrome

## Yarn

Technical specifications	Average Values	Standard
Titer	95 tex	ISO 1889 (2009)
Weighted composition	Warp: Glass 36%, PVC 64%	ISO 3801 (1977)
Diameter	0.28 mm	
Environment		Oekotex standard 100



## Fabric

Type of fabric	PVC-coated fibreglass fabric with aluminum back
Weave pattern	basket weave
Widths	2400 mm (tolerance -0%, +5%)
Roll length (nominally)	30 m

Technical specifications	Average Values	Standard
Thickness	0.50 mm	ISO/DIS 5084.2 (1996)
Mass	401 g/m <sup>2</sup>	ISO 3801 (1977)
Fire resistance	FR	NFPA 701 (2010)
Breaking strength	warp 140 daN, weft 180 daN	ISO 13934-1 (1999)
Elongation at break	warp 3%, weft 5.2%	ISO 13934-1 (1999)
Tear resistance	warp 5.6 daN, weft 6.4 daN	ISO 4674 part 1 method A (2003)
Colourfastness	7-8 scale of blue	ISO 105 B02 (1994)
Air porosity	299 l/m <sup>2</sup> /sec	ISO/DIS 9237 (1995)

## The Quality Chain

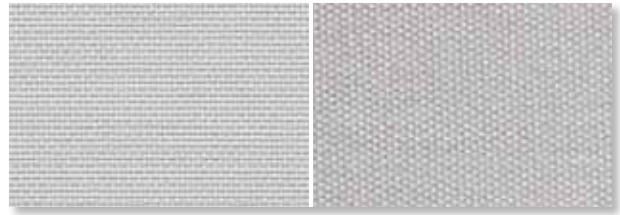
General - specifications are purely indicative and may not be considered as binding. Colours may vary from the samples shown

Cutting	crush or ultrasonic; railroad or width out of roll width
Welding	thermal, HF, ultrasonic, sewing
Cleaning	vacuum cleaning or using a soft cloth

# Our Panama Pro fabric with a metalized back.

- Reflects up to 72% of the solar energy
- Improved thermal comfort
- Reduces the amount of diffuse light transmittance
- Improved glare control and view through
- Improved visual comfort

**101101 white - A/B**  
Width: 2400 mm



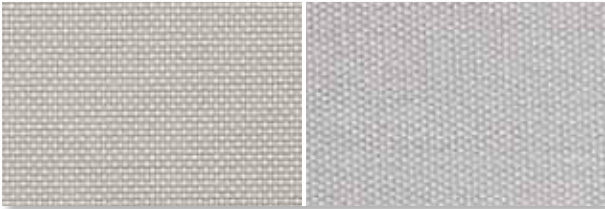
Solar Heat & Light Control Properties

	Ts	Rs	As	Tv	TVdiff	TVdir	Tuv	TVdif-h	Glare Control
A	3.8	69.9	26.3	3.7	1.2	2.5	2.9	2.91	Class 3
B	3.7	72.5	23.8	3.6	1.4	2.2	2.8	2.87	Class 3

gtot

	A	B	C	D
	int.	int.	int.	int.
A Values	0.31	0.34	0.34	0.25
A Classes	2	2	2	2
B Values	0.29	0.33	0.33	0.24
B Classes	2	2	2	2

**101116 white-linen - A/B**  
Width: 2400 mm



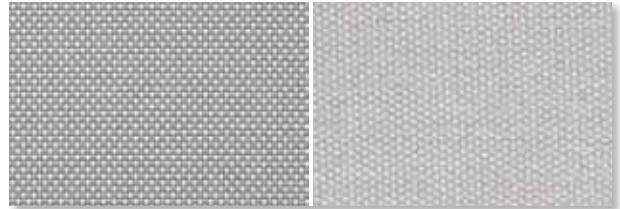
Solar Heat & Light Control Properties

	Ts	Rs	As	Tv	TVdiff	TVdir	Tuv	TVdif-h	Glare Control
A	2.8	64	33.2	2.8	1	1.8	2.1	2.22	Class 3
B	3.4	72.4	24.2	3.3	1.3	2	2.5	2.63	Class 3

gtot

	A	B	C	D
	int.	int.	int.	int.
A Values	0.34	0.37	0.36	0.25
A Classes	2	1	1	2
B Values	0.29	0.33	0.34	0.24
B Classes	2	2	2	2

**101117 white-pearl - A/B**  
Width: 2400 mm



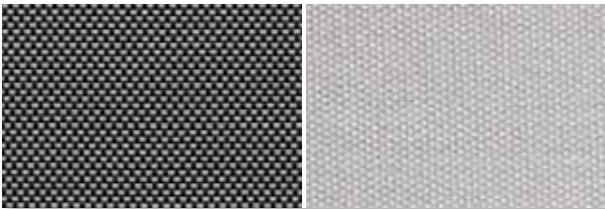
Solar Heat & Light Control Properties

	Ts	Rs	As	Tv	TVdiff	TVdir	Tuv	TVdif-h	Glare Control
A	3.1	55.3	41.6	3	0.9	2.1	2.4	2.35	Class 3
B	3.5	71.2	25.3	3.5	1.2	2.3	2.8	2.77	Class 3

gtot

	A	B	C	D
	int.	int.	int.	int.
A Values	0.39	0.41	0.39	0.26
A Classes	1	1	1	2
B Values	0.30	0.33	0.33	0.24
B Classes	2	2	2	2

**118117 black-pearl - A/B**  
Width: 2400 mm



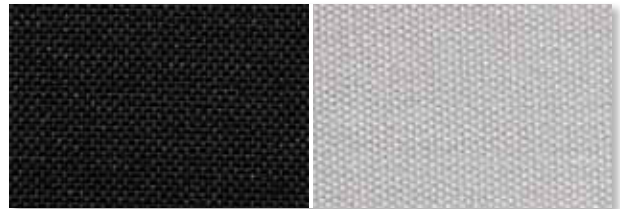
Solar Heat & Light Control Properties

	Ts	Rs	As	Tv	TVdiff	TVdir	Tuv	TVdif-h	Glare Control
A	2.6	11.3	86.1	2.6	0.4	2.2	2.6	1.98	Class 3
B	2.6	72.7	24.7	2.6	0.6	2	2.5	2.01	Class 3

gtot

	A	B	C	D
	int.	int.	int.	int.
A Values	0.65	0.64	0.53	0.30
A Classes	0	0	0	2
B Values	0.29	0.32	0.33	0.24
B Classes	2	2	2	2

**118118 black - A/B**  
Width: 2400 mm



Solar Heat & Light Control Properties

	Ts	Rs	As	Tv	TVdiff	TVdir	Tuv	TVdif-h	Glare Control
A	2.8	4.6	92.6	2.8	0.4	2.4	2.8	2.13	Class 3
B	3	72.3	24.7	3	0.7	2.3	2.9	2.32	Class 3

gtot

	A	B	C	D
	int.	int.	int.	int.
A Values	0.69	0.67	0.55	0.30
A Classes	0	0	0	2
B Values	0.29	0.33	0.33	0.24
B Classes	2	2	2	2